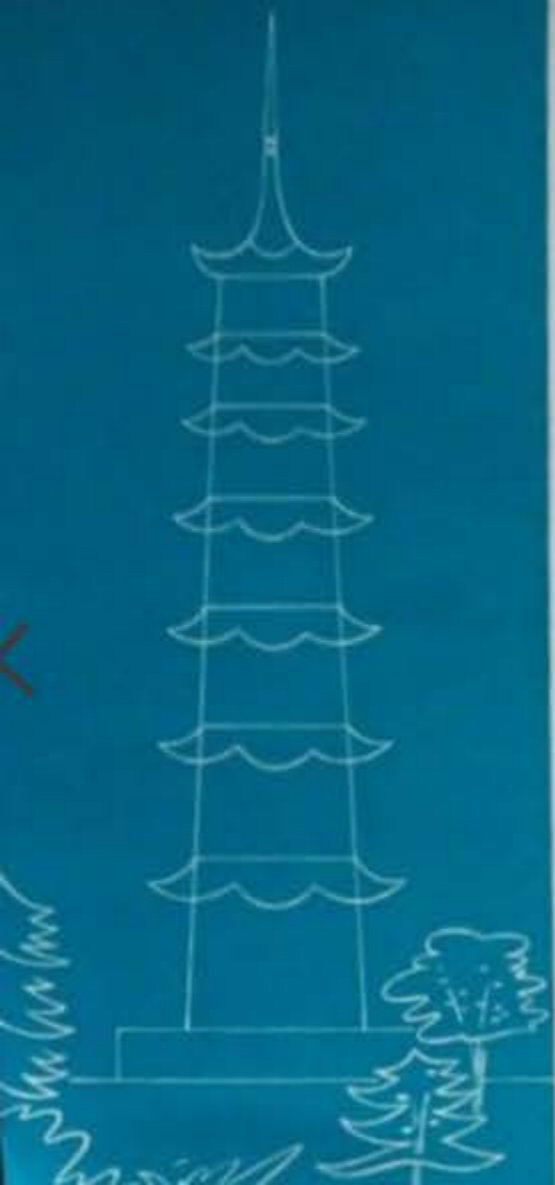


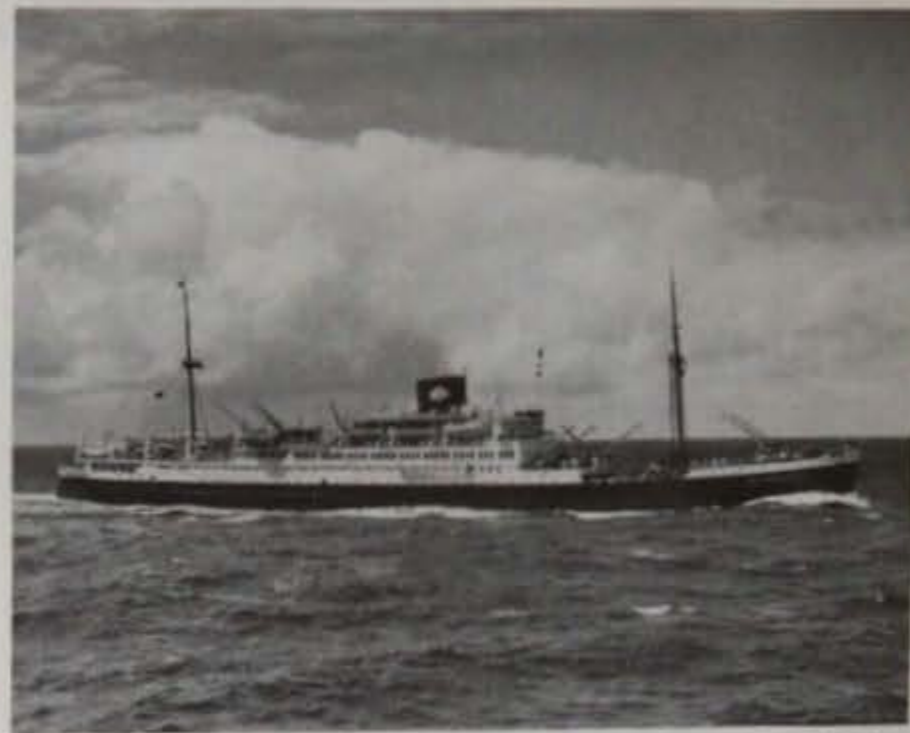


*Royal InterOcean Lines*





*Royal Inter-ocean Lines*



MS. BELLEVILLE OF RIL



*Take those sparkling blue waters —  
soak up a jiffy  
of fascination, colour and liveliness;  
mix well with choice parts of rail  
and water generously upon the water.*

*Take a spell-binding ravel of sea lanes —  
thread your parts with care;  
and there, as it were, you have  
a general idea of  
Royal InterOcean Lines.*

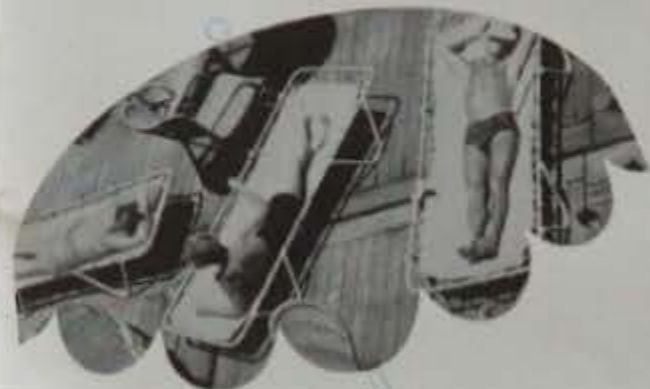
*to be more precise*

**ROYAL INTEROCEAN LINES**  
is a Netherlands shipping company whose pleasure it is to trade in the southern hemisphere for the home service of those wishing to ship cargo and of those wishing to ship themselves. R.I.L., whose experience in these southern waters dates back to the late nineteenth century, has a fleet of over forty vessels. Her passenger and cargo lanes stretch further than most: from Japan to SOUTH AFRICA and SOUTH AMERICA, from AUSTRALIA to ISLAND; from HONG KONG to INDONESIA, to name the more important links. The routes of her ships unfold another world both to the would-be traveller and to the seasoned traveller — a world of other peoples, customs, and traditions. Their journeys include famous places — BANGKOK, MANILLA, SINGAPORE, HONOLULU, SYDNEY, AUCKLAND, HAMBURG, HONG KONG, BANGKOK, HAMBURG, SYDNEY, HULL.

*And as we come to our ships  
AND MORE OF THE PLACES THEY VISIT . . .*



MR. BUY



Cooling off on MR. BUY



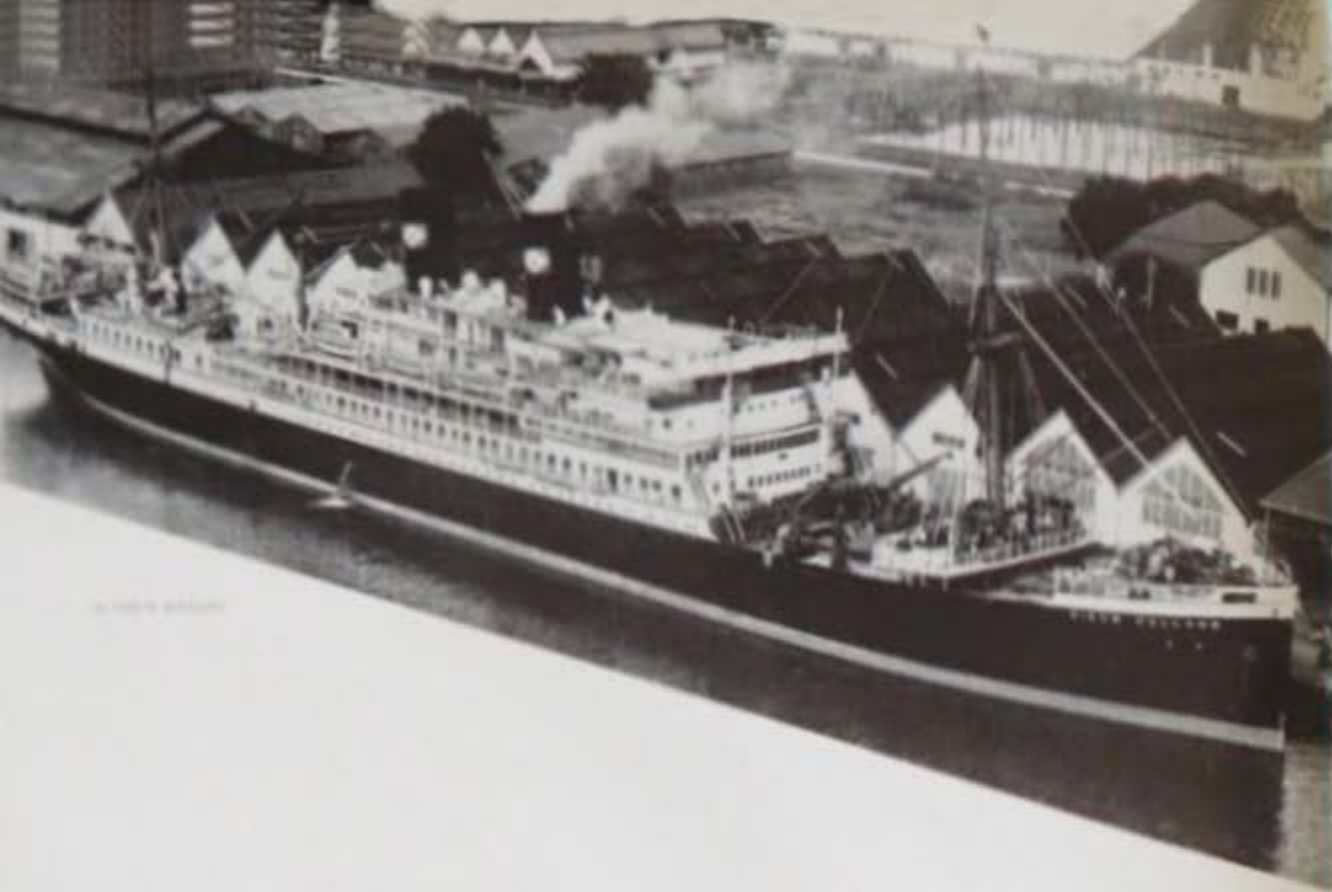


*Women of Ndebele Tribe, South Africa*

*Air-conditioned cabin de luxe, ms. 8034*

*ms. 8034/1000 in Hong Kong Harbor*





W. H. B. B. B.



Eight at first table, at 10:15 on 10:15



Hong Kong night



Департамент Японии

№ 118

Департамент по вопросам культуры





M/S TORONTO loading cargo



M/S TORONTO



Sugar Loaf, Rio de Janeiro



Goats, South America



Double cabin, M/S TORONTO



Dining-room, M/S TORONTO



Bar



Lounge



Dining



SS. STRAAT MANNA - leaving Sydney Harbour



Bar

... and lounge

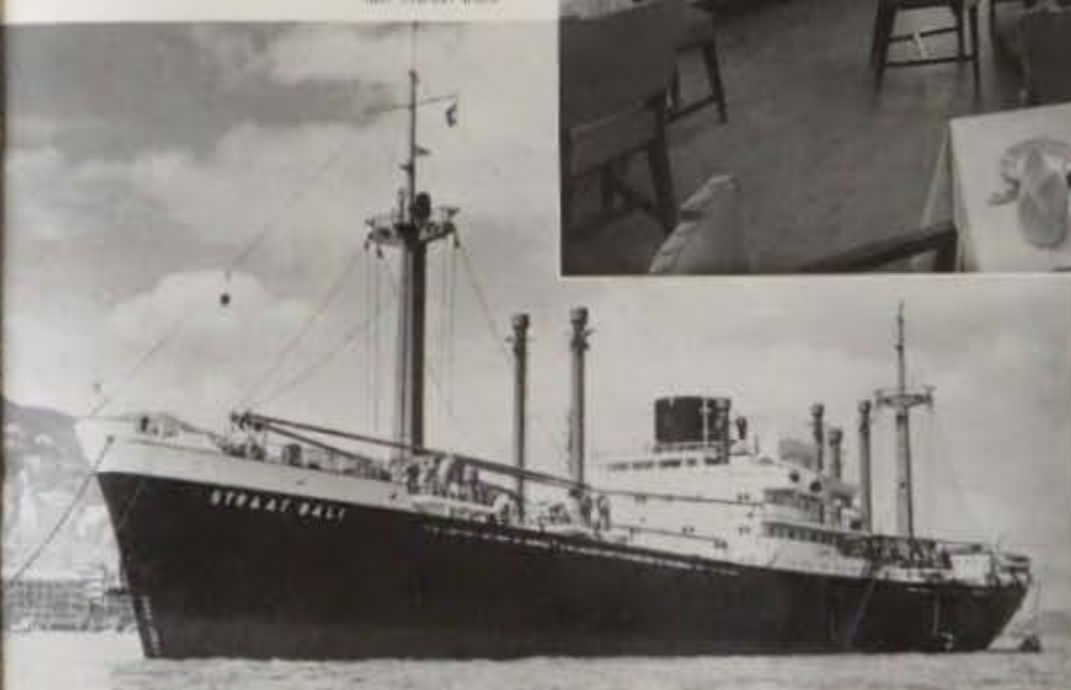
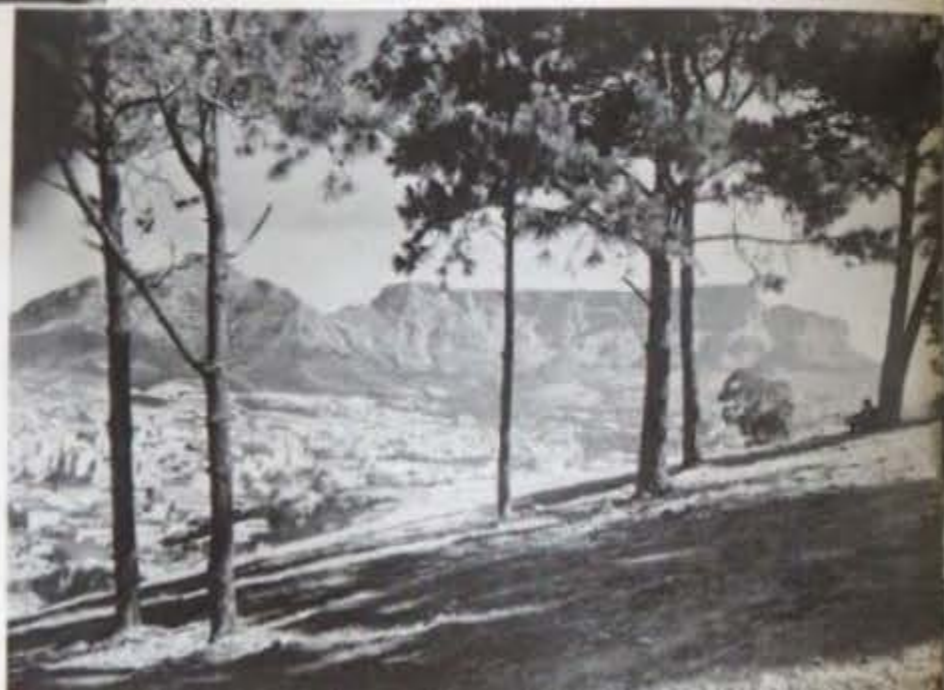






*Tobit Mountain, Cape Town*

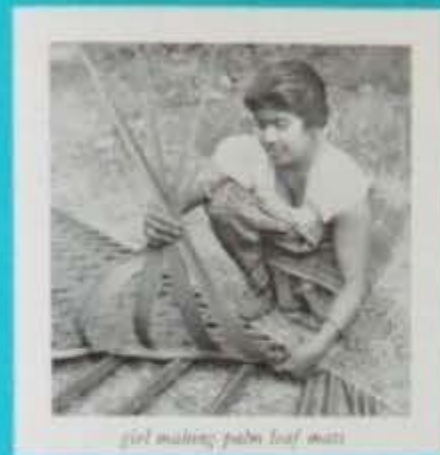
MR. STRAAT HALL



*and her dining-room*



SS. SCOTCH BUCK



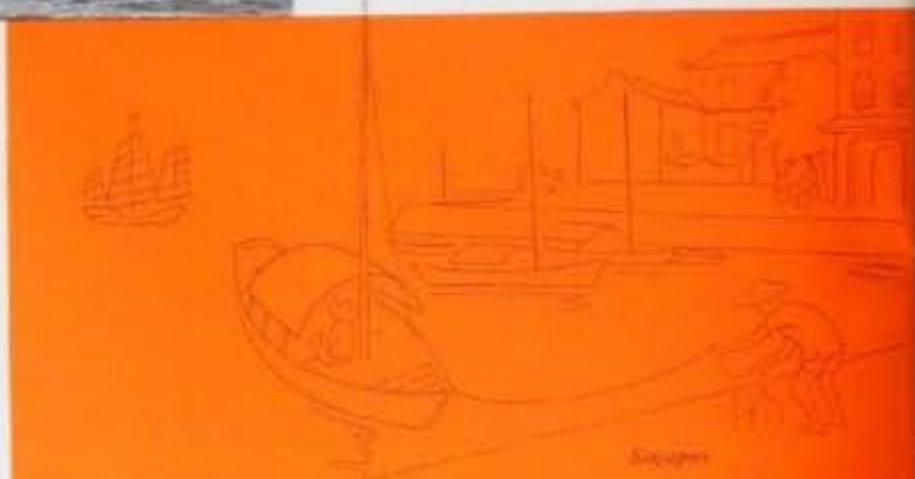
girl making palm leaf mat

42000

drummer and drummer



and cabin



Singapore



SS. STRAIT SINGAPORE



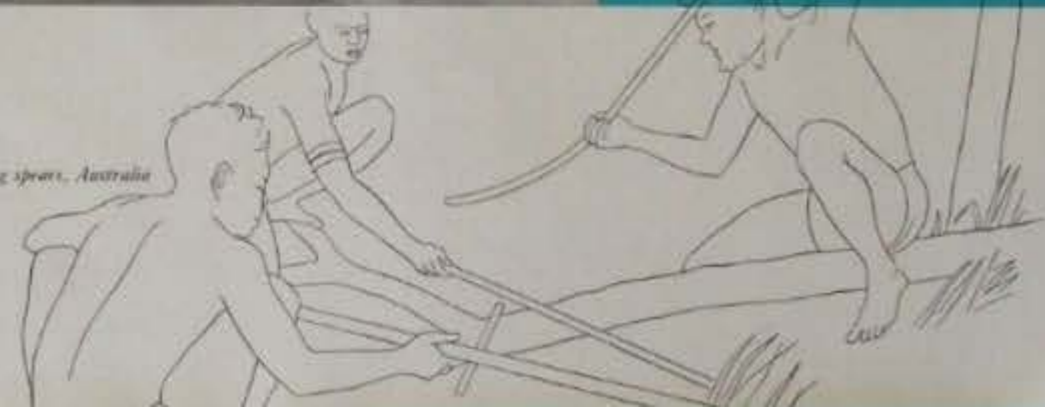
MR. MAGNUSSEN

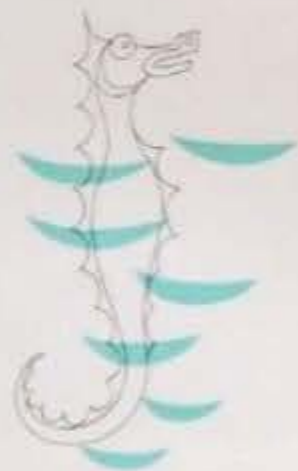


MR. HINSHANG leaving Sydney Harbour



Aborigines making spears, Australia





MS. STRAIT LINE



'BON VOYAGE'



